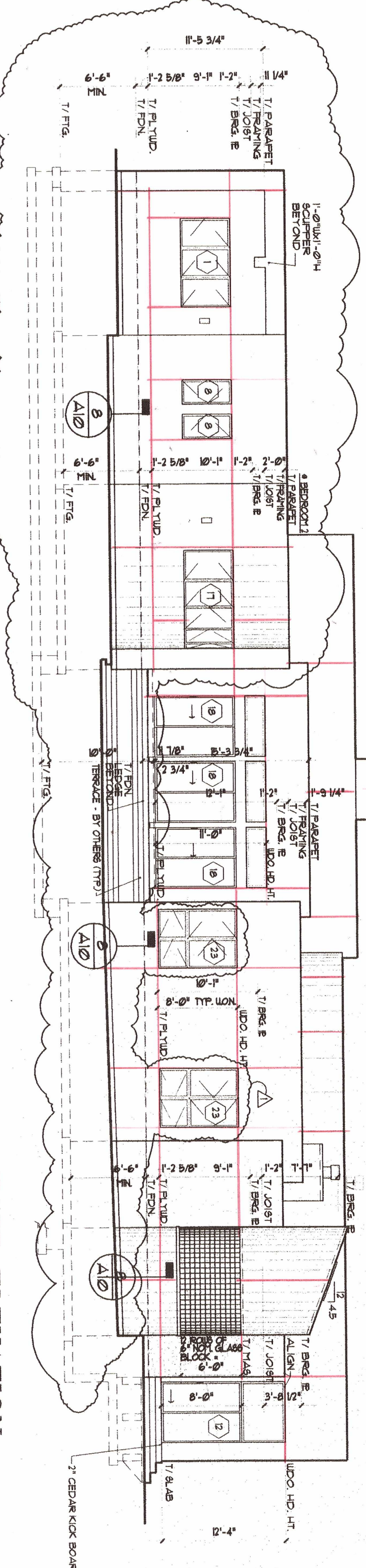
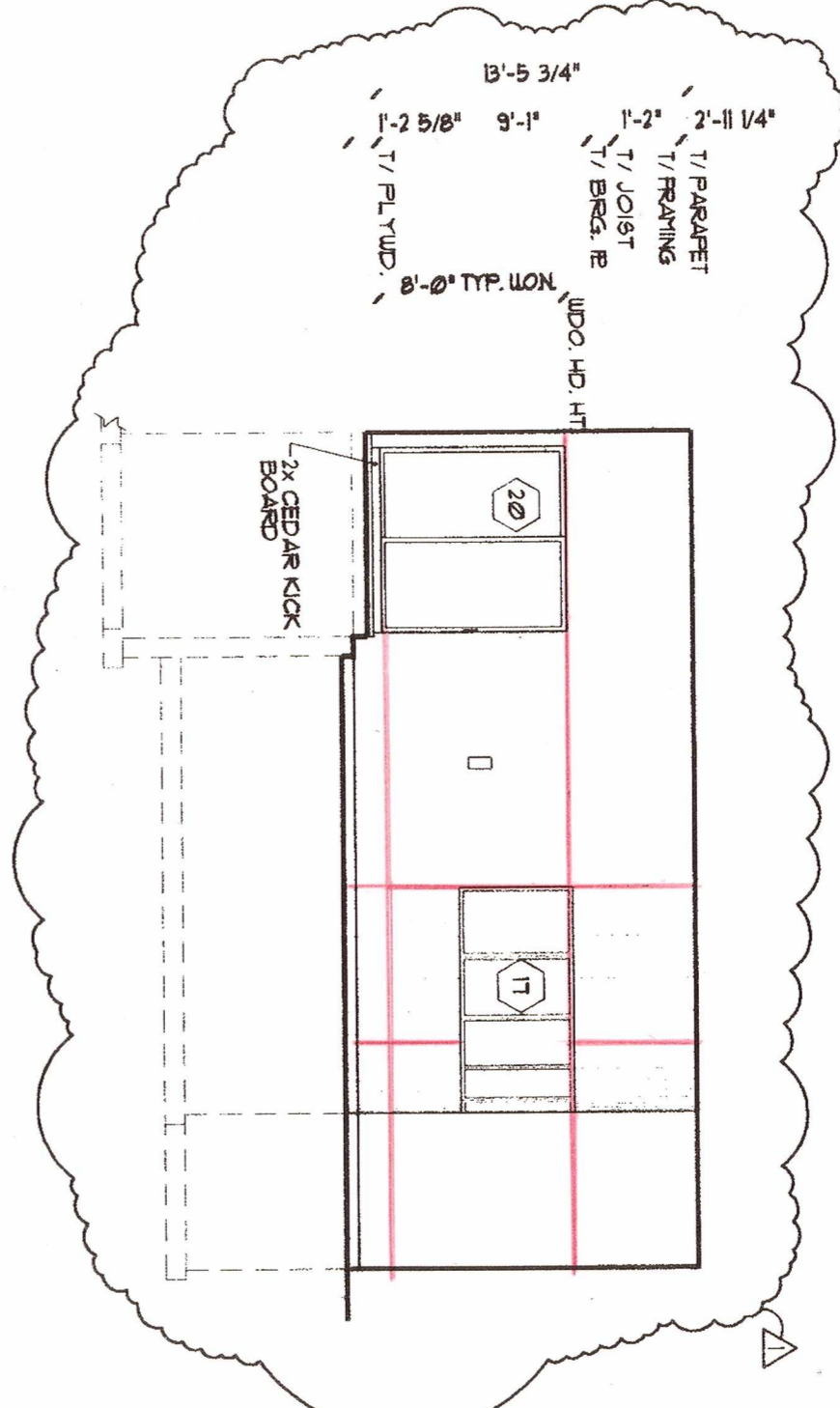


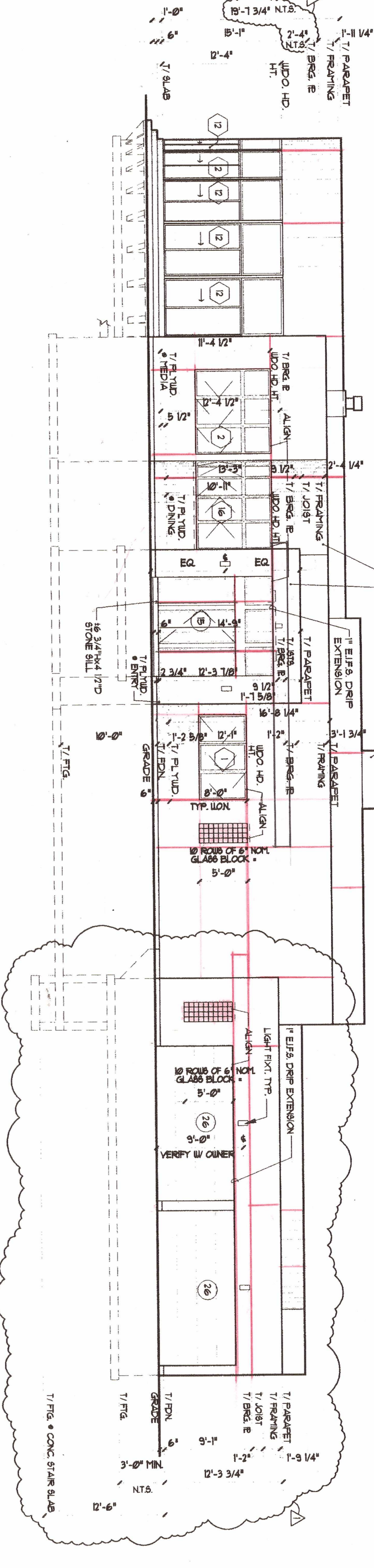
4A
4B
PARTIAL
EAST ELEVATION
1/8" = 1'-0"



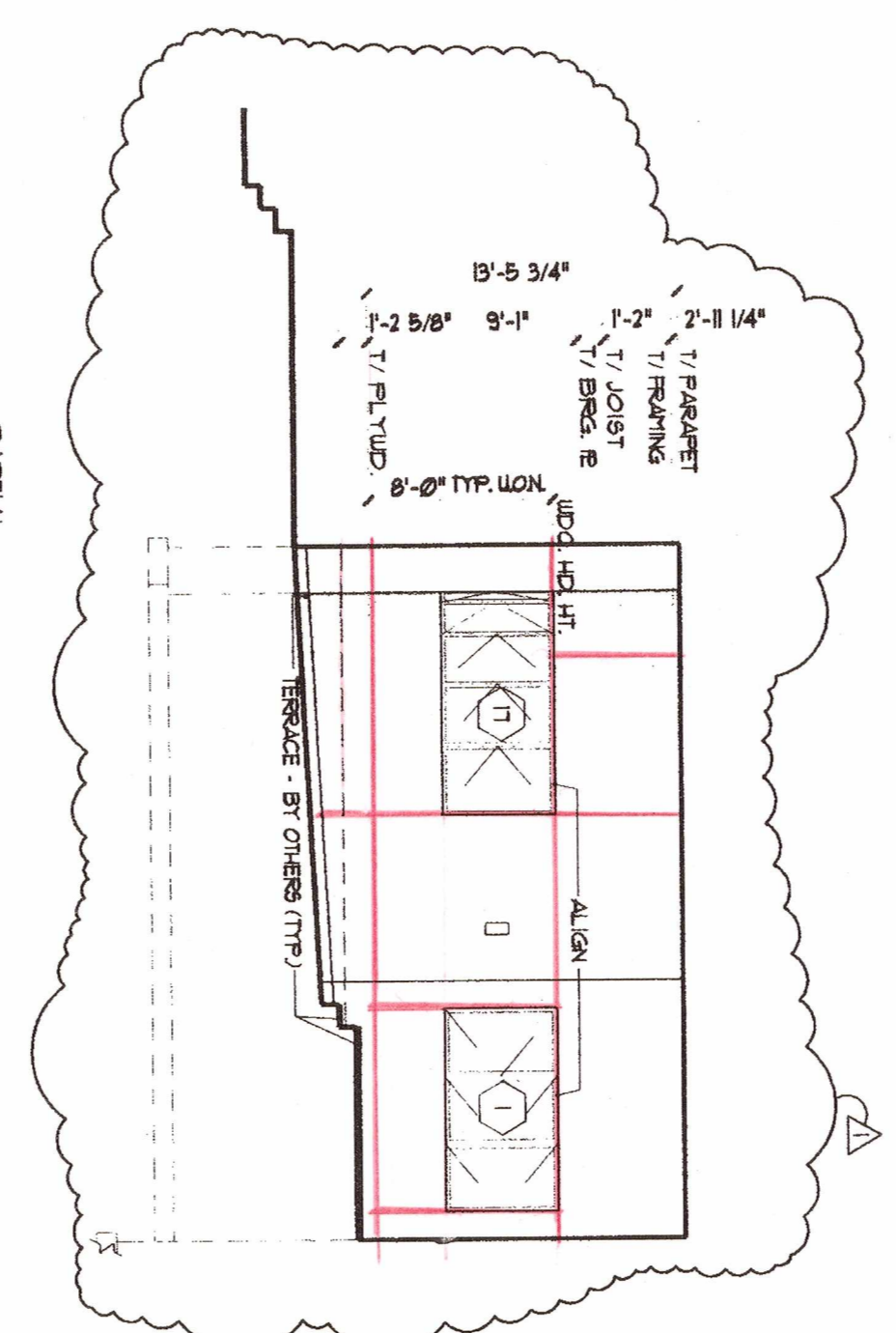
4
4A
4B
EAST ELEVATION
1/8" = 1'-0"



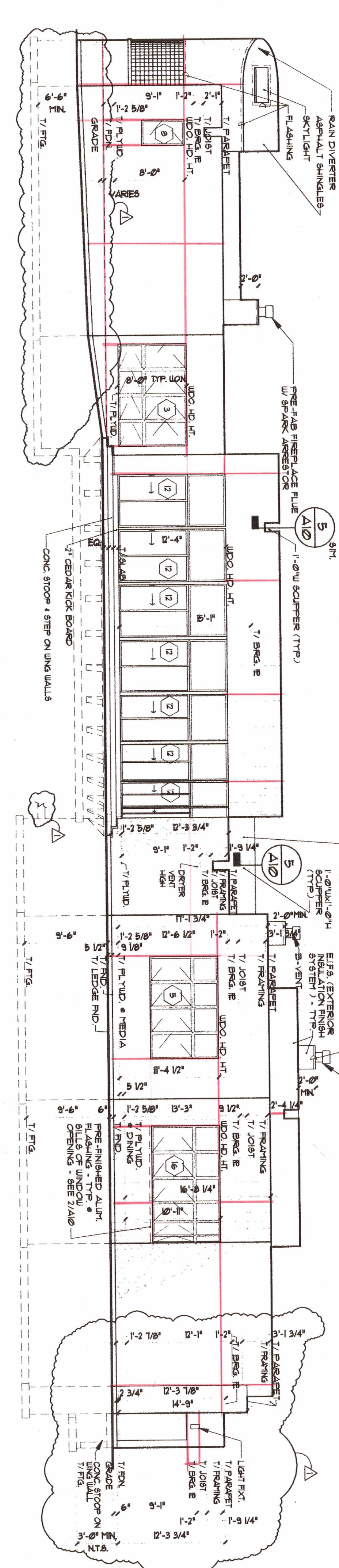
3A
3B
PARTIAL
WEST ELEVATION
1/8" = 1'-0"



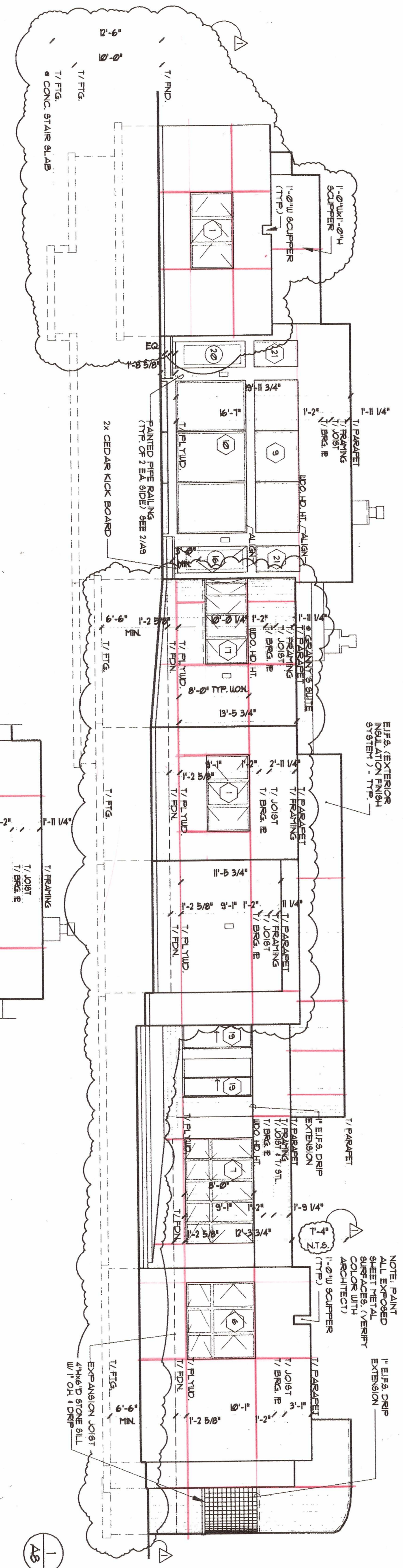
3
3A
3B
WEST ELEVATION
1/8" = 1'-0"



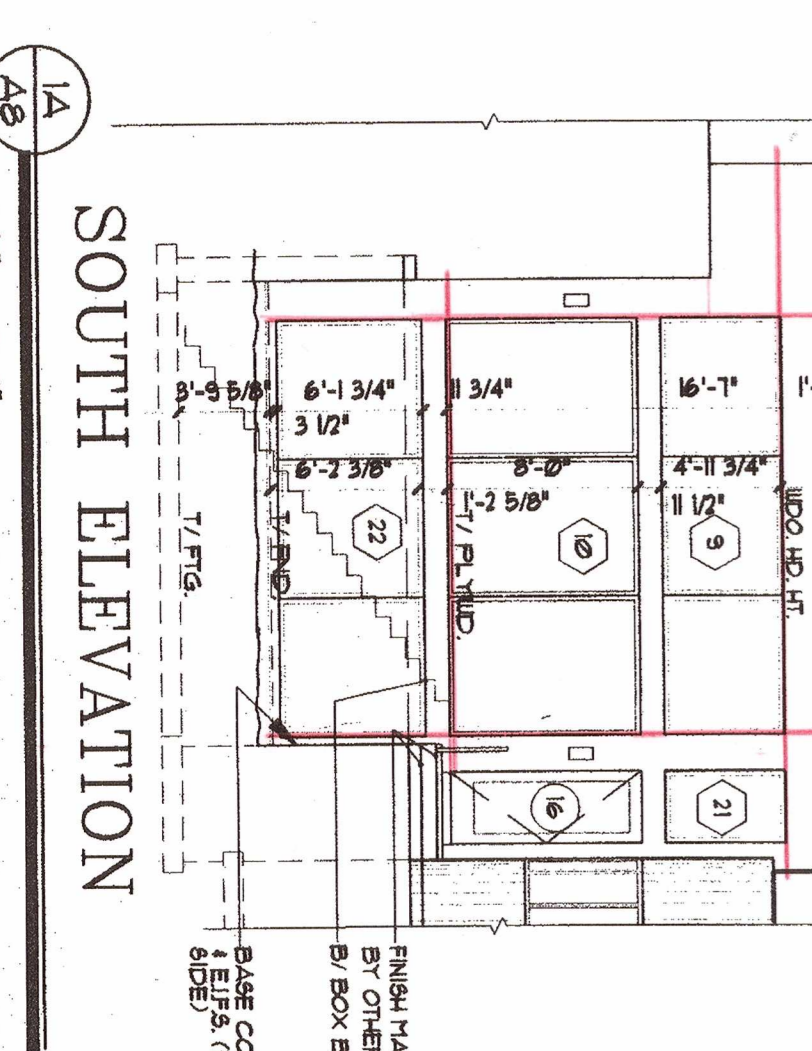
2A
2B
PARTIAL
NORTH ELEVATION
1/8" = 1'-0"



2
2A
2B
NORTH ELEVATION
1/8" = 1'-0"



1
1A
1B
SOUTH ELEVATION
1/8" = 1'-0"



1A
1B
SOUTH ELEVATION
1/8" = 1'-0"

REVISIONS		
NO.	DATE	DESCRIPTION
0	0-23-96	ISSUED FOR BIDDING
1	0-23-96	ISSUED FOR PERMIT
1	0-23-96	PERMIT REVISIONS
1	0-23-96	CHANGE ORDER REVISIONS
1	0-23-96	DIMENSION CLARIFICATION

GOLDBERG DOWNEY
ARCHITECTS · INC.

1178 Everett Road, Lake Forest, Illinois 60045 (847)295-5777

EXTERIOR ELEVATIONS
CUSTOM RESIDENCE:
THE MARCUS RESIDENCE
2225 GREENVIEW ROAD
NORTHBROOK, ILLINOIS

DRAWN BY: MLH/JF
CHECKED BY: JER/MD
SCALE: 1/8" = 1'-0"
DATE: 12-22-96

SHEET
A8
OF 14 SHEETS
JOB NUMBER
0507600

© 1997 COPYRIGHT ALL RIGHTS RESERVED